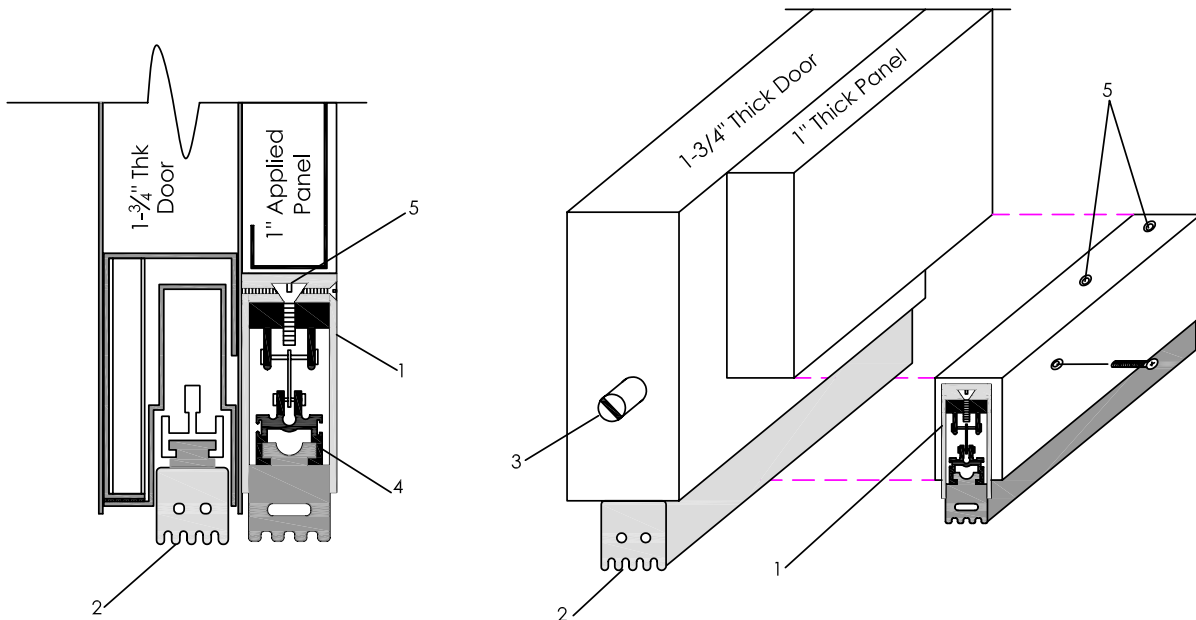


DOUBLE AUTOMATIC DOOR BOTTOMS AT PANELIZED DOORS

DOUBLE AUTOMATIC DOOR BOTTOM

- Remove the surface mounted door bottom (1), then proceed with the adjustment of the mortised door bottom (2).
- Adjust by turning the plunger (3) at the hinge edge of the door in or out with a screwdriver. Adjust so the neoprene makes positive contact the full width of the door without any excessive pressure, then retracts as soon as the door begins to open. Check contact with a thin plastic card. When inserted between the seal and the floor/threshold, the card should fit snugly but not be difficult to remove.
- Reapply the Reese 521 surface door bottom (1). The aluminum housing has been (or should be) cut to the same width as the applied panel. The neoprene insert should be cut accurately to fit tightly against the jamb seals at each side when the door is closed. Secure the insert in place by crimping the aluminum retainer at each end (4) or by applying a bead of Duro Cyanoacrylate Super Glue-3 at each end.
- The adjusting screws on this door bottom (5) are on the top surface due to the applied panel. The door bottom may have to be removed several times to get it adjusted properly. Check the adjustment with a thin plastic card, as noted above, to see that the seal makes positive contact the full width and at each side.
- Door bottoms (DB3) are shipped installed in the fully retracted position to prevent damage. Do not slide or store the doors on the door bottom. Care should be exercised not to run electrical cords, use wedges, or allow construction debris to accumulate under the door after it is hung. These conditions will cause damage to the neoprene in the door bottom and will prevent the door from operating properly.



DOUBLE CAM LIFT DOOR BOTTOMS AT PANELIZED DOORS

CAM LIFT DOOR BOTTOM

- The door bottom seal is shipped applied to the door (1). After the door is hung, we recommend removing the bottom seal assembly, marking it with the door # and storing it until the project is finished. This should be done to prevent damaging the neoprene inserts (3). Do not block the door open with wedges or similar objects. This will damage or tear the neoprene.
- Reapply the door bottom assembly with $\frac{1}{4}$ "-20 T.H.M.S. and washers (2) but do not tighten at this time.
- Close the door and adjust the housing so the neoprene seals (3) make firm contact the full width. If the sill is uneven, this may require tightening the end screws, adjusting the middle, then tightening these screws.
- The neoprene is a double seal and should be cut accurately at each end to fit snugly against the frame and the jamb seal.
- Sand, plaster or other construction debris will damage the neoprene seal to the point that may require it to be replaced to function properly.

